

AirBlade™

Runtech's patented AirBlade™ technology improves sheet dryness and sheet profiles

AirBlade™ perfects doctoring on the grooved and suction rolls.

The grooved roll RSP AirBlade™ improves the grooved roll dewatering with a sharp and powerful air knife.

The suction roll RSE AirBlade™ improves the vacuum roll doctoring performance significantly. The natural foil effect is amplified with compressed air.



BENEFITS

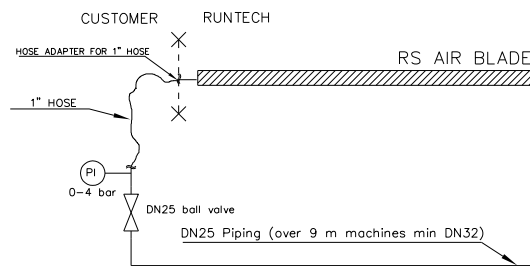
- Higher dryness
- Improved moisture profile
- Improved dewatering
- Longer felt life
- Cleaner roll
- Improved runnability

RESULTS

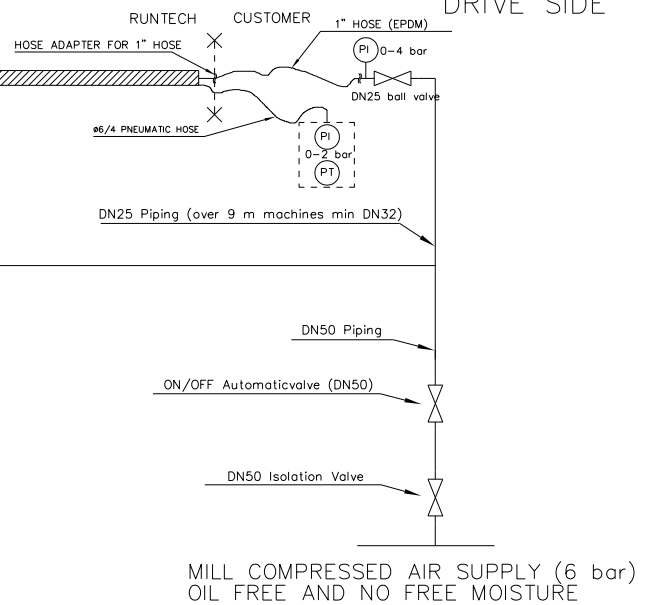
- M-Real Kyrö PM3: 1.8 % improved dryness after the press
- UPM Tervasaari PM5: Improved moisture profile: 2-sigma value from 0.35 to 0.20
- Palm Wörth PM6: 35 % more nip dewatering and the felt total dewatering is 7 % higher
- Mondi Ruzomberok PM17: 80 m/min higher machine speed and 0.3 % -units less draw
- Smurfit Mengibar PM3: 1 % – 2 % higher dryness after the press with the shoe press Air Blade

Typical pneumatic piping

TENDING SIDE



DRIVE SIDE



APPLICATION GUIDELINES

- Press section with grooved and blind drilled rolls
- Wire and press section suction rolls
- Shoe presses with backing bar
- Recommended roll hardness < 20 P&J
- A hose loaded blade holder is recommended
- Loading pressure 50 – 200 N/m
- Compressed air consumption
1.0 – 1.8 Nm³/min/meter
- Blade angle
 - RSP AirBlade™ – 21 degrees
 - RSE AirBlade™ – 23 degrees

REFERENCES - over 270 installations world wide

- Burgo Verzuolo PM9 – 1st press grooved roll
- Delfort Dunafin PM9 – press suction roll and 2nd press grooved roll
- Domtar Hawesville PM2 – couch roll and 1st press grooved roll
- Domtar Johnsonburg PM5 – suction transfer roll
- IP Cedar Rapids PM1 – shoe press
- IP Cedar Rapids PM2 – shoe press
- IP Mansfield PM1 – shoe press
- IP Springfield PM2 – ENP sleeve
- Mondi Ruzomberok PM17 – 1st and 2nd press grooved rolls
- Mondi Ruzomberok PM18 – couch roll and 1st press grooved rolls
- Mondi Steti PM5 – 1st press grooved roll and press suction roll
- M-Real Kyro PM3 – 1st, 3rd and 4th press grooved roll
- NewPage Port Hawkesbury PM2 – couch roll
- Ningbo Xiaogang BM6 – 1st press grooved roll
- OJI Tomioka N1 – 1st press grooved roll
- Palm Wörth PM6 – 1st and 2nd press grooved rolls
- Shandong Chenming PM6 – 1st press grooved roll
- Shandong Huatai PM8 – 1st press grooved roll
- Smurfit Kappa Mengibar PM3 – shoe press
- Stora Enso Kaukopää PDM – couch and 1st press grooved roll
- Stora Enso Maxau PM6 – 1st and 4th press grooved rolls
- Stora Enso Maxau PM7 – 1st and 4th press grooved rolls
- Stora Enso Veitsiluoto PM1 – couch, press suction and 1st and 3rd press grooved rolls
- Suzano Bahia Sul PDM – 1st and 2nd press grooved rolls
- Thai Paper PM2 – couch roll
- UPM Steyermühl PM4 – 1st press grooved roll
- Varel BM5 – extractor press
- Weyerhaeuser Longview – press suction roll



CompoAdapt™

The tube loaded carbon composite blade holder means easy maintenance and trouble-free operation

Runtech Systems state of the art composite manufacturing technology provides a solution for challenging doctoring positions.

Doctoring is a basic operation in paper and board making which is often taken for granted. The CompoAdapt™ composite holder is designed to be installed on existing steel doctor beams, as well on the newest generation of Runtech CompoDoc™ full carbon composite doctor beams.



FEATURES

- Light carbon composite construction
- Uni-directional carbon composite top plate
- Robust design – suitable for sheet knock down positions
- No heat expansion
- Specially designed for composite doctor beams but can also be used with conventional steel doctors

BENEFITS

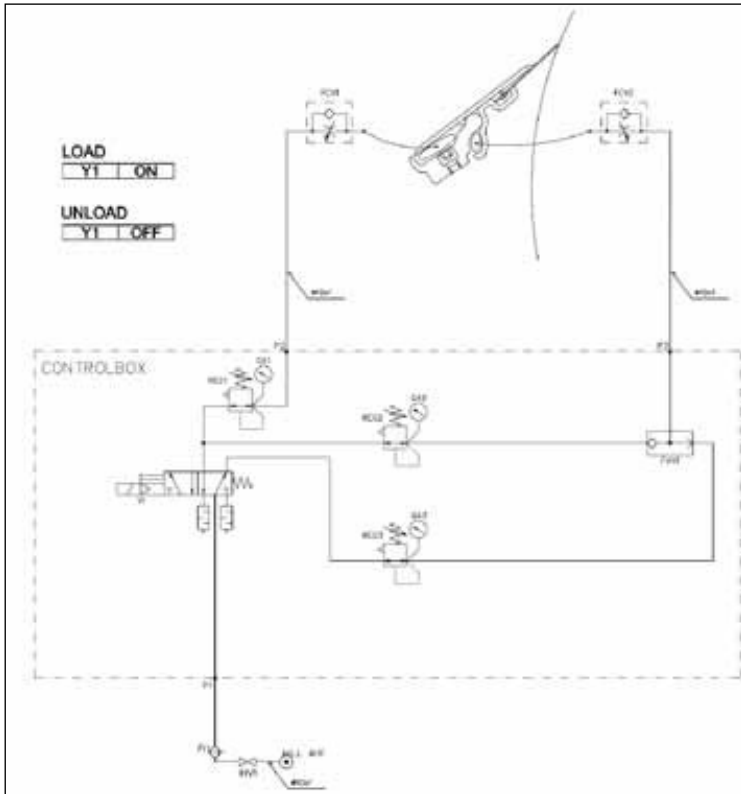
- Easy maintenance and handling, including blade changes
- Excellent conformability across the machine
- Easy to install and keep clean
- Designed to effortlessly facilitate the replacement of conventionally hose loaded (DST) holders with CompoAdapt™

APPLICATIONS

- All sheet knock down positions
- Breast roll
- Press rolls
- Drying cylinders
- Calender rolls
- Reel
- Guide rolls

Typical pneumatic drawing

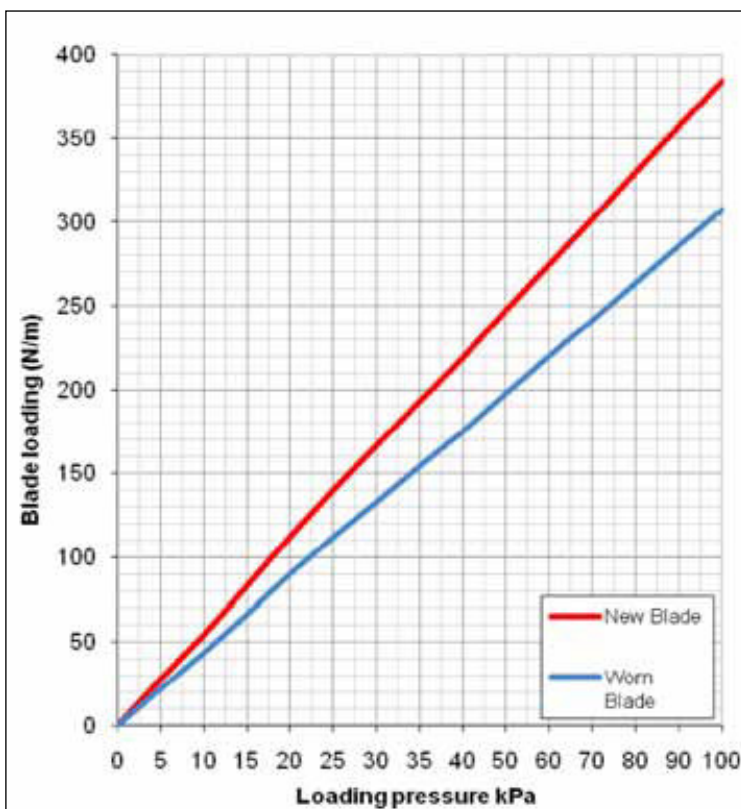
REFERENCES - over 150 units sold



- AHL Rottersac PM1 - 4 pcs
- Arctic Paper PM1 - 2 pcs
- Domtar Johnsonburg PM5 - 1 pcs
- Domtar Marboro PM1 - 4 pcs
- Dunafin PM9, Hungary - 3 pcs
- Hamburger Pitten PM4 - 15 pcs
- Hamburger Dunaújváros PM7
- Kemiartliners - 2 pcs
- Kreuzau PM3 - 3 pcs
- Madison Paper PM3 - 2 pcs
- Mondi Steti PM5 - 3 pcs
- NewPage Porthawkesbury PM1 - 1 pcs
- NewPage Porthawkesbury PM2 - 2 pcs
- Propapier PM1 - 1 pcs
- SCA Ortviken PM4 - 4 pcs
- SCA Ortviken PM5 - 4 pcs
- Stora Enso Hylte PM4 - 2 pcs
- Stora Enso Kotka PM1 - 3 pcs
- Stora Enso Kvarnsveden PM11 - 2pcs
- Stora Enso Kvarnsveden PM8 - 2 pcs
- Stora Enso Veitsiluoto PM1 - 7 pcs
- UPM Caladonia PM1 - 2 pcs
- UPM Chapelle PM3 - 5 pcs
- UPM Kaipola PM7 - 1 pcs

CompoAdapt loading graph

[with 50 kPa Opening Pressure]



SPARE PARTS

- P 1 2 0 1 6 Top Plate
- P 1 2 0 1 7 Spare Hose Kit